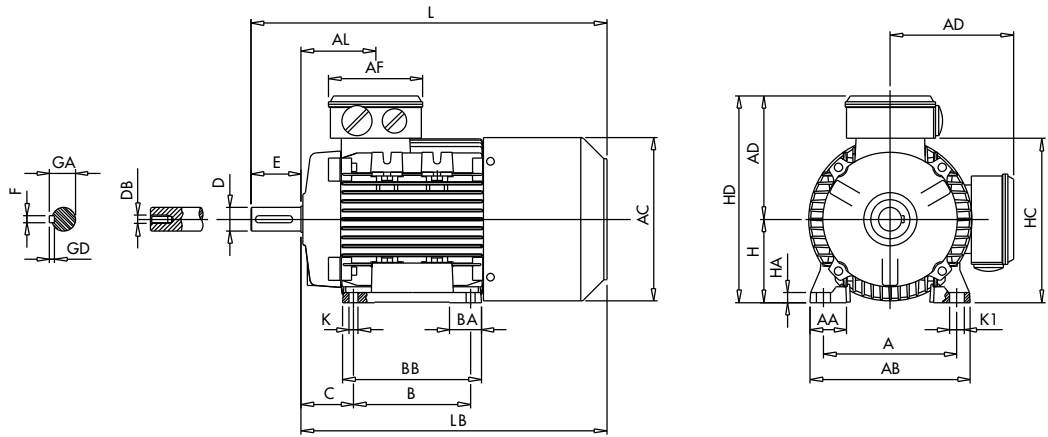


BRAKE MOTORS FRAME SIZE 63-160 IM B3 AMBY-AMBZ SERIES

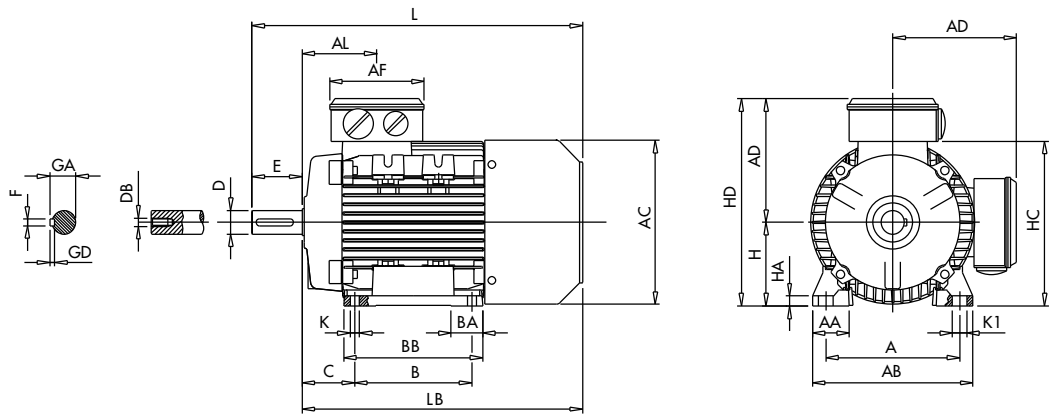


	IEC	H	A	B	C	K ¹⁾	AB	BB	AD ²⁾	HD ²⁾	AC	HC	HA
63		63	100	80	40	7	120	100	96	159	124	120	8
71		71	112	90	45	8	135	108	110	181	138	142	8
80		80	125	100	50	10	153	125	129	208	156	161	9.5
90S		90	140	100	56	10	170	150	137	227	178	180	11
90L		90	140	125	56	10	170	150	137	227	178	180	11
100		100	160	140	63	11	192	166	144	244	192	197	12
112		112	190	140	70	12.5	220	175	160	272	222	225	15
132S		132	216	140	89	12	256	180	194	326	259	261	17
132M		132	216	178	89	12	256	218	194	326	259	261	17
160M		160	254	210	108	14	320	270	237	397	316	317	23
160L		160	254	254	108	14	320	310	237	397	316	317	23
160L ⁴⁾		160	254	254	108	14	320	310	237	397	316	317	23

	IEC	K1	L	LB	AL	AF	BA	AA	D	E	F	GD	GA	DB ³⁾
63		11	267	244	63	92	29	30	11	23	4	4	12.5	M4
71		11	300	270	69	92	28	31	14	30	5	5	16	M5
80		14	350	310	79	116	29	35	19	40	6	6	21.5	M6
90S		15	403	353	85	116	28/53	37	24	50	8	7	27	M8
90L		15	403	353	85	116	28/53	37	24	50	8	7	27	M8
100		17	465	405	91	116	38	44	28	60	8	7	31	M10
112		19	487	427	92	116	46	48	28	60	8	7	31	M10
132S		20	592	512	100	133	45	59	38	80	10	8	41	M12
132M		20	612	532	120	133	45	59	38	80	10	8	41	M12
160M		18	721	611	146	150	65	76	42	110	12	8	45	M16
160L		18	763	653	168	150	65	76	42	110	12	8	45	M16
160L ⁴⁾		18	790	680	168	150	65	76	42	110	12	8	45	M16

- 1) Clearance hole for screw
- 2) Maximum dimension
- 3) Centering holes in shaft extensions to DIN 332 part 2
- 4) Only for LR A4

BRAKE MOTORS FRAME SIZE 63-160 IM B3 AMS SERIES



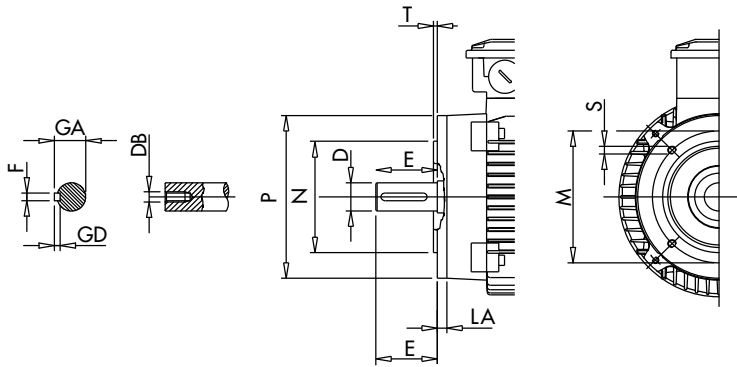
	IEC	H	A	B	C	K ¹⁾	AB	BB	AD ²⁾	HD ²⁾	AC	HC	HA
63		63	100	80	40	7	120	100	96	159	124	120	8
71		71	112	90	45	8	135	108	110	181	139	142	9
80		80	125	100	50	9.5	153	125	128	208	157	161	9.5
90S		90	140	100	56	10	170	150	137	227	177	180	11
90L		90	140	125	56	10	170	150	137	227	177	180	11
100		100	160	140	63	11	192	166	144	244	196	197	12
112		112	190	140	70	12.5	220	176	160	272	222	225	15
132S		132	216	140	89	12	256	180	194	326	248	261	17
132M		132	216	178	89	12	256	218	194	326	248	261	17
160M		160	254	210	108	14	320	270	237	397	316	317	23
160L		160	254	254	108	14	320	310	237	397	316	317	23

	IEC	K1	L	LB	AL	AF	BA	AA	D	E	F	GD	GA	DB ³⁾
63		11	226	203	63	92	29	30	11	23	4	4	12.5	M4
71		11	255	225	69	92	28	31	14	30	5	5	16	M5
80		14	294	254	79	116	29	35	19	40	6	6	21.5	M6
90S		15	340	290	85	116	28/53	37	24	50	8	7	27	M8
90L		15	340	290	85	116	28/53	37	24	50	8	7	27	M8
100		17	379	319	91	116	38	44	28	60	8	7	31	M10
112		19	396	336	92	116	46	48	28	60	8	7	31	M10
132S		20	480	400	100	133	45	59	38	80	10	8	41	M12
132M		20	500	420	120	133	45	59	38	80	10	8	41	M12
160M		18	614	504	146	150	65	76	42	110	12	8	45	M16
160L		18	658	548	168	150	65	76	42	110	12	8	45	M16

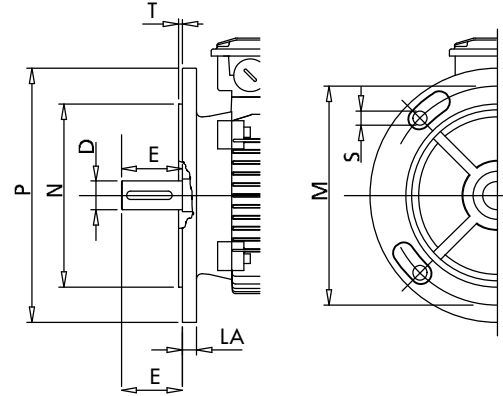
- 1) Clearance hole for screw
- 2) Maximum dimension
- 3) Centering holes in shaft extensions to DIN 332 part 2

BRAKE MOTORS FRAME SIZE 63-160 IM B5-IM B14 AMBY - AMBZ - AMS SERIES

IM B14

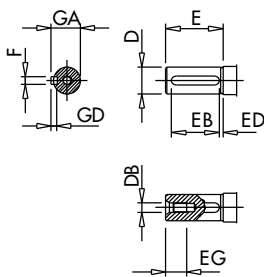


IM B5



SMALL FLANGE B14							LARGE FLANGE B14						FLANGE B5					
IEC	P	N	LA	M	T	S	P	N	LA	M	T	S	M	N	P	T	LA	S ¹⁾
63	90	60	8	75	2.5	M5	120	80	8	100	2.5	M6	115	95	140	3	8	M8
71	105	70	8	85	2.5	M6	140	95	8	115	3	M8	130	110	160	3.5	10	M8
80	120	80	9	100	3	M6	160	110	8.5	130	3.5	M8	165	130	200	3.5	10	M10
90	140	95	9	115	3	M8	160	110	9	130	3.5	M8	165	130	200	3.5	12	M10
100	160	110	10	130	3.5	M8	200	130	12	165	3.5	M10	215	180	250	4	14	M12
112	160	110	10	130	3.5	M8	200	130	12	165	3.5	M10	215	180	250	4	14	M12
132	200	130	30	165	3.5	M10	250	180	12	215	4	M12	265	230	300	4	14	M12
160	250	180	12	215	4	M12	300	230	12	265	5	M16	300	250	350	5	15	M16

1) Clearance hole for screw. Hole as standard for 132 to 160 frame size



IEC	D	E	F h9	GD	GA	DB ¹⁾	EG	EB	ED
63	11 $\text{h}9$	23	4	4	12.5	M4	10	15	4
71	14 $\text{h}9$	30	5	5	16	M5	12.5	20	4
80	19 $\text{h}9$	40	6	6	21.5	M6	16	30	4
90	24 $\text{h}9$	50	8	7	27	M8	19	40	4
100	28 $\text{h}9$	60	8	7	31	M10	22	50	4
112	28 $\text{h}9$	60	8	7	31	M10	22	50	4
132	38 k6	80	10	8	41	M12	28	70	4
160	42 k6	110	12	8	45	M16	36	100	4

1) Centering holes in shaft extension to DIN 332 part 2