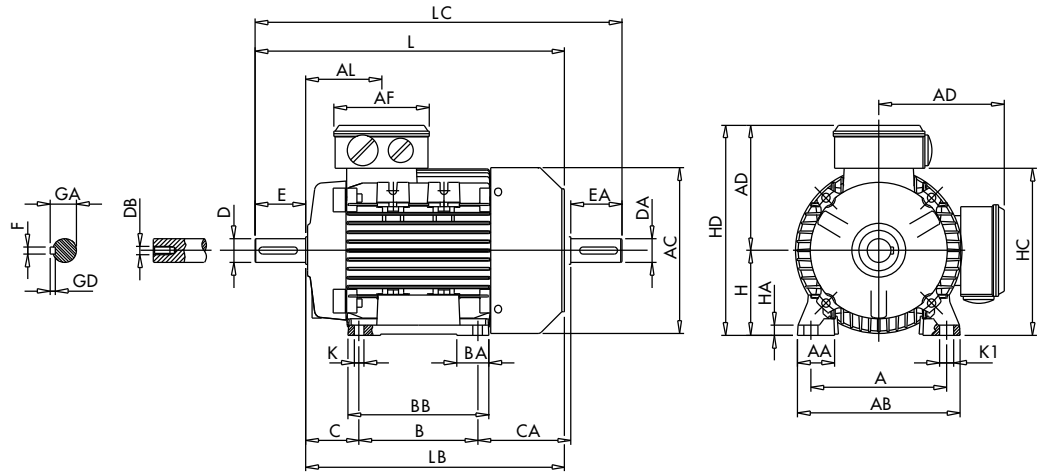


THREE-PHASE FRAME SIZE 80 - 160 IM B3 AMH - AMPH* SERIES - ALUMINIUM ALLOY FRAME

*Only AMPH 2 poles motors. For AMPH 4 poles motors, please consult us



IEC	Poles	kW	H	A	B	C	K ¹⁾	AB	BB	CA	AD ²⁾	HD ²⁾	AC	HC
80	2 - 4	all	80	125	100	50	10	153	125	89	129	209	160	162
90S	2 - 4	all	90	140	100	56	10	170	150	116	138	228	180	181
90L	2 - 4	all	90	140	125	56	10	170	150	91	138	228	180	181
100	2	all	100	160	140	63	11	192	166	110	145	245	196	198
	4	2.2	100	160	140	63	11	192	166	110	145	245	196	198
	4	3	100	160	140	63	11	192	166	144	145	245	194	198
112	2 - 4	all	112	190	140	70	12.5	220	176	126	160	272	225	225
132S	2	5.5	132	216	140	89	12	256	180	134	194	326	248	261
	2	7.5	132	216	140	89	12	256	180	154	194	326	248	261
	4	5.5	132	216	140	89	12	256	180	134	194	326	248	261
132M	2	all	132	216	178	89	12	256	218	156	194	326	248	261
	4	all	132	216	178	89	12	256	218	136	194	326	248	261
160M	2 - 4	all	160	254	210	108	14	320	270	180	238	398	317	316
160L	2 - 4	all	160	254	254	108	14	320	310	180	238	398	317	316

IEC	Poles	kW	HA	K1	L	LB	LC	AL	AF	BA	AA	D/DA	E/EA	F/FA	GD/GF	GA/GC	DB/DC ³⁾
80	2 - 4	all	9.5	14	272	232	319	79	116	28.5	34.5	19	40	6	6	21.5	M6
90S	2 - 4	all	11	15	317	267	372	85	116	28/53	37	24	50	8	7	27	M8
90L	2 - 4	all	11	15	317	267	372	85	116	28/53	37	24	50	8	7	27	M8
100	2	all	12	17	366	306	433	91	116	38	44	28	60	8	7	31	M10
	4	2.2	12	17	366	306	433	91	116	38	44	28	60	8	7	31	M10
	4	3	12	17	400	340	467	91	116	38	44	28	60	8	7	31	M10
112	2 - 4	all	15	19	388	328	456	92	116	46	48	28	60	8	7	31	M10
132S	2	5.5	17	20	445	365	523	100	133	45	59	38	80	10	8	41	M12
	2	7.5	17	20	465	385	543	100	133	45	59	38	80	10	8	41	M12
	4	5.5	17	20	445	365	523	100	133	45	59	38	80	10	8	41	M12
132M	2	all	17	20	505	425	583	120	133	45	59	38	80	10	8	41	M12
	4	all	17	20	485	405	563	120	133	45	59	38	80	10	8	41	M12
160M	2 - 4	all	23	18	608	498	668	146	150	65	76	42/28	110/60	12/8	8/7	45/31	M16/M10
160L	2 - 4	all	23	18	652	542	712	168	150	65	76	42/28	110/60	12/8	8/7	45/31	M16/M10

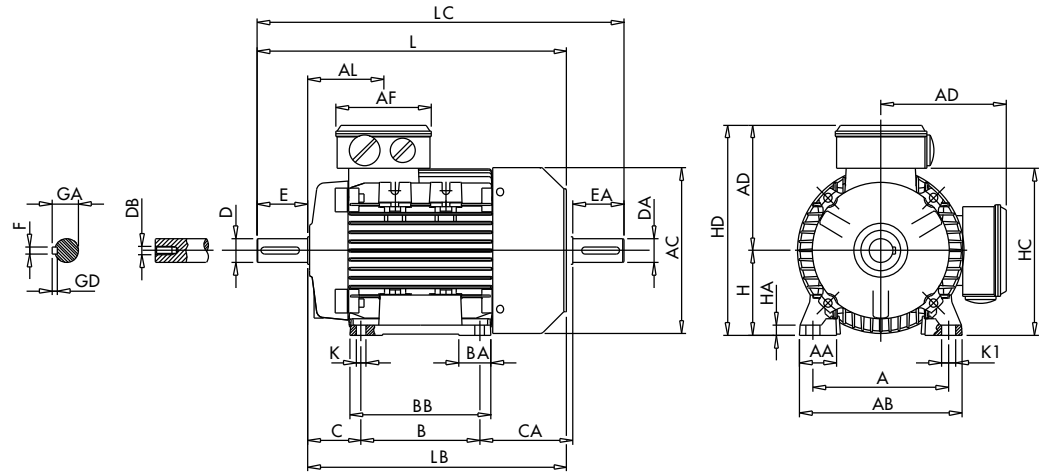
1) Clearance hole for screw

2) Maximum distance

3) Centering holes in shaft extensions to DIN 332 part 2

THREE-PHASE FRAME SIZE 71 - 160 IM B3 AMHE - AMPE* SERIES - ALUMINIUM ALLOY FRAME

*Only AMPE 2 poles motors. For AMPE 4 poles motors, please consult us



IEC	Poles	kW	H	A	B	C	K ¹⁾	AB	BB	CA	AD ²⁾	HD ²⁾	AC	HC
71	2	0.75	71	112	90	45	8	135	108	83	110	181	139	142
80	2 - 4	all	80	125	100	50	10	153	125	89	129	209	160	162
90S 90L	2 - 4	all	90	140	100	56	10	170	150	116	138	228	180	181
	2	2.2	90	140	125	56	10	170	150	91	138	228	180	181
	2	3	90	140	125	56	10	170	150	114	138	228	180	181
100	4	1.5	90	140	125	56	10	170	150	91	138	228	180	181
	2	all	100	160	140	63	11	192	166	110	145	245	196	198
	4	2.2	100	160	140	63	11	192	166	110	145	245	196	198
112	4	3	100	160	140	63	11	192	166	144	145	245	194	198
	2	4 - 5.5	112	190	140	70	12.5	220	176	126	160	272	225	225
	2	7.5	112	190	140	70	12.5	220	176	148	160	272	222	225
132S	4	all	112	190	140	70	12.5	220	176	126	160	272	225	225
	2	5.5	132	216	140	89	12	256	180	134	194	326	248	261
	2	7.5	132	216	140	89	12	256	180	154	194	326	248	261
132M	4	5.5	132	216	140	89	12	256	180	134	194	326	248	261
	2	9.2 - 11	132	216	178	89	12	256	218	156	194	326	248	261
	2	15	132	216	178	89	12	256	218	207	194	326	248	261
160M 160L	4	all	132	216	178	89	12	256	218	136	194	326	248	261
	2 - 4	all	160	254	210	108	14	320	270	180	238	398	317	316
2 - 4	all	160	254	254	108	14	320	310	180	238	398	317	316	

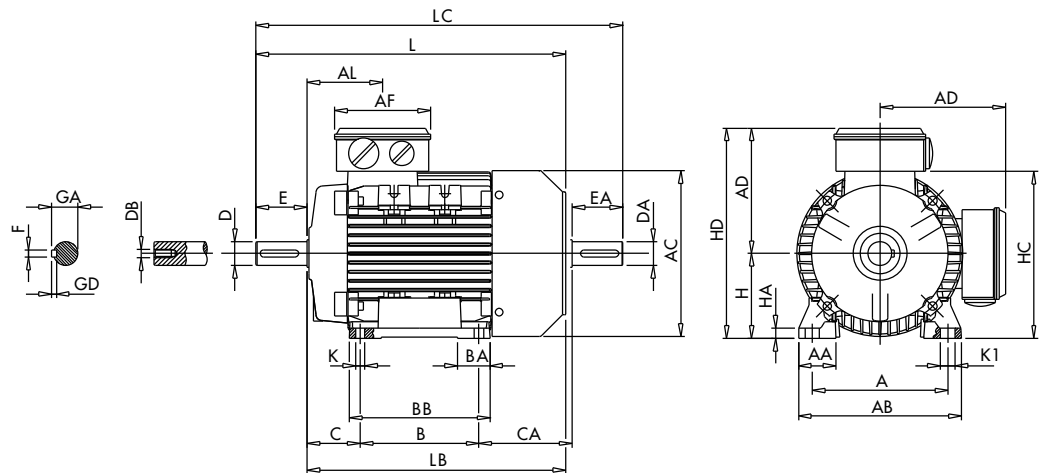
IEC	Poles	kW	HA	K1	L	LB	LC	AL	AF	BA	AA	D/DA	E/EA	F/FA	GD/GF	GA/GC	DB/DC ³⁾
71	2	0.75	9	11	246	216	278	69	92	28	31	14	30	5	5	16	M5
80	2 - 4	all	9.5	14	272	232	319	79	116	28.5	34.5	19	40	6	6	21.5	M6
90S 90L	2 - 4	all	11	15	317	267	372	85	116	28/53	37	24	50	8	7	27	M8
	2	2.2	11	15	317	267	372	85	116	28/53	37	24	50	8	7	27	M8
	2	3	11	15	340	290	395	85	116	28/53	37	24	50	8	7	27	M8
100	4	1.5	11	15	317	267	372	85	116	28/53	37	24	50	8	7	27	M8
	2	all	12	17	366	306	433	91	116	38	44	28	60	8	7	31	M10
	4	2.2	12	17	366	306	433	91	116	38	44	28	60	8	7	31	M10
112	4	3	12	17	400	340	467	91	116	38	44	28	60	8	7	31	M10
	2	4 - 5.5	15	19	388	328	456	92	116	46	48	28	60	8	7	31	M10
	2	7.5	15	19	410	350	478	92	116	46	48	28	60	8	7	31	M10
132S	4	all	15	19	388	328	456	92	116	46	48	28	60	8	7	31	M10
	2	5.5	17	20	445	365	523	100	133	45	59	38	80	10	8	41	M12
	2	7.5	17	20	465	385	543	100	133	45	59	38	80	10	8	41	M12
132M	4	5.5	17	20	445	365	523	100	133	45	59	38	80	10	8	41	M12
	2	9.2 - 11	17	20	505	425	583	120	133	45	59	38	80	10	8	41	M12
	2	15	17	20	556	476	634	120	133	45	59	38	80	10	8	41	M12
160M 160L	4	all	17	20	485	405	563	120	133	45	59	38	80	10	8	41	M12
	2 - 4	all	23	18	608	498	668	146	150	65	76	42/28	110/60	12/8	8/7	45/31	M16/M10
2 - 4	all	23	18	652	542	712	168	150	65	76	42/28	110/60	12/8	8/7	45/31	M16/M10	

1) Clearance hole for screw

2) Maximun distance

3) Centering holes in shaft extensions to DIN 332 part 2

THREE-PHASE FRAME SIZE 71-160 IMB3 AMEE SERIES - ALLUMINIUM ALLOY FRAME



IEC	Poles	kW	H	A	B	C	K ¹⁾	AB	BB	CA	AD ²⁾	HD ²⁾	AC	HC
71	2	0.75	71	112	90	45	8	135	107	81	110	181	139	142
80	2-4	dll	80	125	100	50	10	153	125	89	129	209	160	162
90S	2-4-6	dll	90	140	100	56	10	170	150	116	138	228	180	181
90L	2-4-6	dll	90	140	125	56	10	170	150	91	138	228	180	181
100	2-4-6	dll	100	160	140	63	11	192	166	110	145	245	196	198
112	2	4-5.5	112	190	140	70	12.5	220	176	126	160	272	225	225
	2	7.5	112	190	140	70	12.5	220	176	148	160	272	222	225
	4	4	112	190	140	70	12.5	220	176	126	160	272	225	225
	4	5.5	112	190	140	70	12.5	220	176	148	160	272	222	225
	6	dll	112	190	140	70	12.5	220	176	126	160	272	225	225
132S	2-4-6	dll	132	216	140	89	12	256	180	134	194	326	248	261
132M	2	9.2	132	216	178	89	12	256	218	136	194	326	248	261
	2	11	132	216	178	89	12	256	218	156	194	326	248	261
	2	15	132	216	178	89	12	256	218	207	194	326	248	261
	4	7.5	132	216	178	89	12	256	218	136	194	326	248	261
	4	9.2	132	216	178	89	12	256	218	136	194	326	248	261
	6	4	132	216	178	89	12	256	218	136	194	326	248	261
	6	5.5	132	216	178	89	12	256	218	136	194	326	248	261
160M	2-4-6	dll	160	254	210	108	14	320	270	180	238	398	317	316
160L	2-4-6	dll	160	254	254	108	14	320	310	180	238	398	317	316

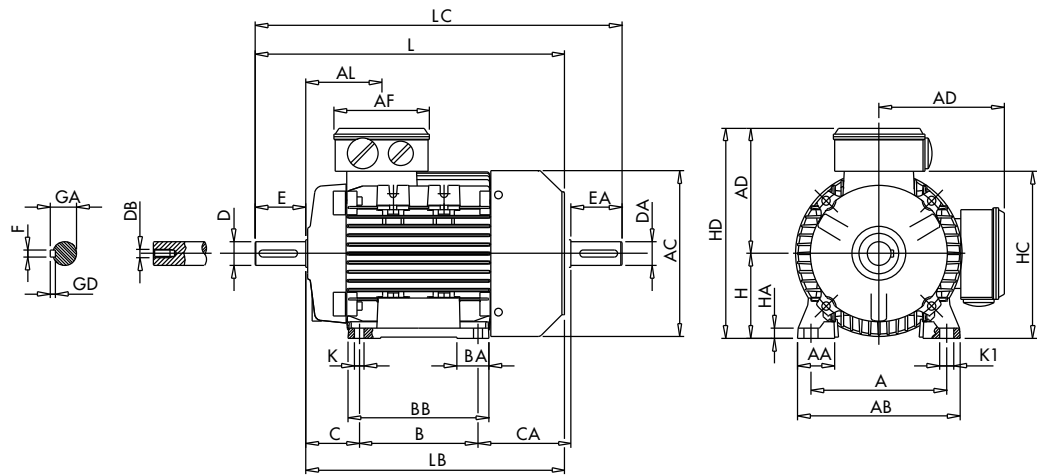
IEC	Poles	kW	HA	K1	L	LB	LC	AL	AF	BA	AA	D/DA	E/EA	F/FA	GD/GF	GA/GC	DB/DC ³⁾
71	2	0.75	9	11	246	216	278	69	92	28	31	14	30	5	5	16	M5
80	2-4	dll	9.5	14	272	232	319	79	116	29	35	19	40	6	6	21.5	M6
90S	2-4-6	dll	11	15	317	267	372	85	116	28/53	37	24	50	8	7	27	M8
90L	2-4-6	dll	11	15	317	267	372	85	116	28/53	37	24	50	8	7	27	M8
100	2-4-6	dll	12	17	366	306	433	91	116	38	44	28	60	8	7	31	M10
112	2	4-5.5	15	19	388	328	456	92	116	46	48	28	60	8	7	31	M10
	2	7.5	15	19	410	350	478	92	116	46	48	28	60	8	7	31	M10
	4	4	15	19	388	328	456	92	116	46	48	28	60	8	7	31	M10
	4	5.5	15	19	410	350	478	92	116	46	48	28	60	8	7	31	M10
	6	dll	15	19	388	328	456	92	116	46	48	28	60	8	7	31	M10
132S 132M	2-4-6	dll	17	20	445	365	523	102	133	45	59	38	80	10	8	41	M12
	2	9.2	17	20	485	405	563	122	133	45	59	38	80	10	8	41	M12
	2	11	17	20	505	425	583	122	133	45	59	38	80	10	8	41	M12
	2	15	17	20	556	476	634	122	133	45	59	38	80	10	8	41	M12
	4	7.5	17	20	485	405	563	122	133	45	59	38	80	10	8	41	M12
	4	9.2	17	20	505	425	583	122	133	45	59	38	80	10	8	41	M12
	6	4	17	20	485	405	563	122	133	45	59	38	80	10	8	41	M12
6	5.5	17	20	505	425	583	122	133	45	59	38	80	10	8	41	M12	
160M	2-4-6	dll	23	18	608	498	668	146	150	65	76	42/28	110/60	12/8	8/7	45/31	M16/M10
160L	2-4-6	dll	23	18	652	542	712	168	150	65	76	42/28	110/60	12/8	8/7	45/31	M16/M10

1) Clearance hole for screw

2) Maximum distance

3) Centering holes in shaft extensions to DIN 332 part 2

THREE-PHASE FRAME SIZE 56 - 160 IM B3 AM SERIES - ALUMINIUM ALLOY FRAME



IEC	H	A	B	C	K ¹⁾	AB	BB	CA	AD ²⁾	HD ²⁾	AC	HC	HA
56	56	90	71	36	6	107	86	64	92	148	110	109	8
63	63	100	80	40	7	120	100	72	96	159	124	120	8
71	71	112	90	45	8	135	108	83	110	181	139	142	9
80	80	125	100	50	10	153	125	89	129	209	160	162	9.5
90S	90	140	100	56	10	170	150	116	138	228	180	181	11
90L	90	140	125	56	10	170	150	91	138	228	180	181	11
100	100	160	140	63	11	192	166	110	145	245	196	198	12
112	112	190	140	70	12.5	220	175	126	161	273	225	226	15
132S	132	216	140	89	12	256	180	134	195	327	248	261	17
132M	132	216	178	89	12	256	218	136	195	327	248	261	17
132M ⁴⁾	132	216	178	89	12	256	218	166	195	327	248	261	17
160M	160	254	210	108	14	320	270	180	238	398	317	316	23
160L	160	254	254	108	14	320	310	180	238	398	317	316	23
160L ⁵⁾	160	254	254	108	14	320	310	210	238	398	317	316	23

IEC	K1	L	LB	LC	AL	AF	BA	AA	D/DA	E/EA	F/FA	GD	GA/GC	DB ³⁾
56	9	188	168	211	61	92	27	27	9	20	3	3	10.2	M3
63	11	211	188	238	63	92	29	30	11	23	4	4	12.5	M4
71	11	246	216	278	69	92	28	31	14	30	5	5	16	M5
80	14	272	232	319	79	116	28.5	34.5	19	40	6	6	21.5	M6
90S	15	317	267	372	85	116	28/53	37	24	50	8	7	27	M8
90L	15	317	267	372	85	116	28/53	37	24	50	8	7	27	M8
100L	17	366	306	433	91	116	38	44	28	60	8	7	31	M10
112M	19	388	328	456	91.5	116	46	48	28	60	8	7	31	M10
132S	20	442	362	523	100	133	45	59	38	80	10	8	41	M12
132M	20	482	402	563	120	133	45	59	38	80	10	8	41	M12
132M ⁴⁾	20	500	420	593	120	133	45	59	38	80	10	8	41	M12
160M	18	608	498	718	146	150	65	76	42	110	12	8	45	M16
160L	18	652	542	762	168	150	65	76	42	110	12	8	45	M16
160L ⁵⁾	18	678	568	778	168	150	65	76	42	110	12	8	45	M16

1) Clearance hole for screw

2) Maximum dimension

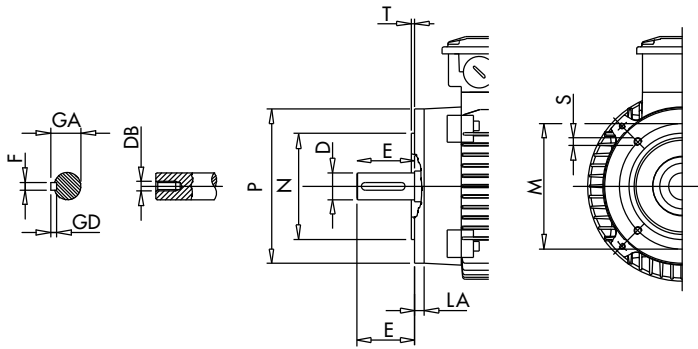
3) Centering holes in shaft extensions to DIN 332 part 2

4) Only for MT A2

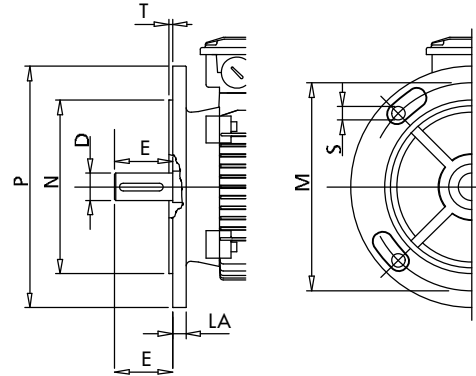
5) Only for LR A4

THREE-PHASE FRAME SIZE 56 - 160 IM B14, IM B5 AM-AMEE-AMHE-AMH-AMPE-AMPH SERIES - ALUMINIUM ALLOY FRAME

IM B14

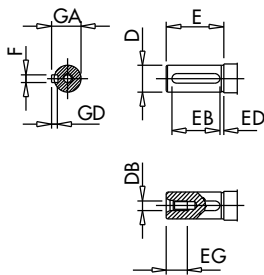


IM B5



IEC	SMALL FLANGE B14						LARGE FLANGE B14											
	P	N	LA	M	T	S	P	N	LA	M	T	S	M	N	P	T	LA	S ¹⁾
56	80	50	8	65	2.5	M5	105	70	8	85	2.5	M6	100	80	120	2.5	7	M6
63	90	60	8	75	2.5	M5	120	80	8	100	2.5	M6	115	95	140	3	8	M8
71	105	70	8	85	2.5	M6	140	95	8	115	3	M8	130	110	160	3.5	10	M8
80	120	80	9	100	3	M6	160	110	8.5	130	3.5	M8	165	130	200	3.5	10	M10
90	140	95	9	115	3	M8	160	110	9	130	3.5	M8	165	130	200	3.5	12	M10
100	160	110	10	130	3.5	M8	200	130	12	165	3.5	M10	215	180	250	4	14	M12
112	160	110	10	130	3.5	M8	200	130	12	165	3.5	M10	215	180	250	4	14	M12
132	200	130	30	165	3.5	M10	250	180	12	215	4	M12	265	230	300	4	14	M12
160	250	180	12	215	4	M12	300	230	12	265	5	M16	300	250	350	5	15	M16

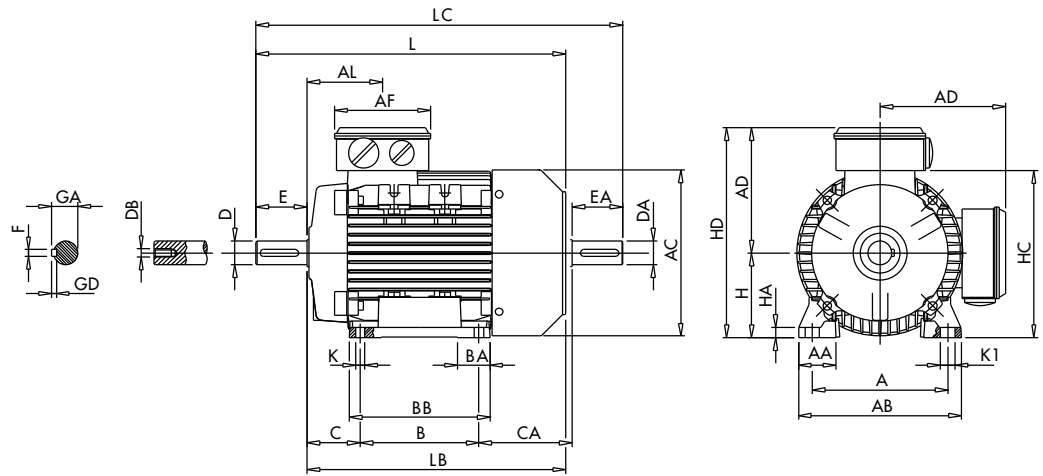
1) Clearance hole for screw. Hole as standard for 132 to 160 frame size



IEC	D	E	F h9	GD	GA	DB ¹⁾	EG	EB	ED
56	9 $\text{h}9$	20	3	3	10.2	M3	10	15	2.5
63	11 $\text{h}9$	23	4	4	12.5	M4	10	15	4
71	14 $\text{h}9$	30	5	5	16	M5	12.5	20	4
80	19 $\text{h}9$	40	6	6	21.5	M6	16	30	4
90	24 $\text{h}9$	50	8	7	27	M8	19	40	4
100	28 $\text{h}9$	60	8	7	31	M10	22	50	4
112	28 $\text{h}9$	60	8	7	31	M10	22	50	4
132	38 k6	80	10	8	41	M12	28	70	4
160	42 k6	110	12	8	45	M16	36	100	4

1) Centering holes in shaft extension to DIN 332 part 2

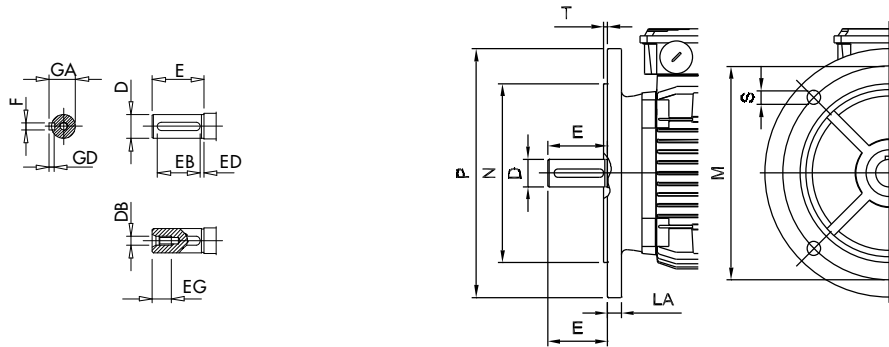
THREE-PHASE FRAME SIZE 180 - 315 IM B3 AMHE SERIES - CAST IRON FRAME



IEC	Poles	H	A	B	C	K ¹⁾	AB	BB	AD	HD	AC
180M	≥ 2	180	279	241	121	15	354	311	268	439	360
180L	≥ 2	180	279	279	121	15	354	348	268	439	360
200	≥ 2	200	318	305	133	19	393	370	297	497	399
225S	≥ 4	225	356	286	149	19	440	361	333	553	465
225M	2	225	356	311	149	19	440	386	333	553	465
	≥ 4	225	356	311	149	19	440	386	333	553	465
250	2	250	406	349	168	24	484	443	366	616	506
	≥ 4	250	406	349	168	24	484	443	366	616	506
280S	2	280	457	368	190	24	560	459	395	668	559
	≥ 4	280	457	368	190	24	560	459	395	668	559
280M	2	280	457	419	190	24	560	510	395	668	559
	≥ 4	280	457	419	190	24	560	510	395	668	559
315S	2	315	508	406	216	28	628	590	530	840	680
	≥ 4	315	508	406	216	28	628	590	530	840	680
315M	2	315	508	457	216	28	628	672	530	840	680
	≥ 4	315	508	457	216	28	628	672	530	840	680
315L	2	315	508	508	216	28	628	672	530	840	680
	≥ 4	315	508	508	216	28	628	672	530	840	680

IEC	Poles	HA	L	LB	AL	AA	D	E	F	GD	GA	DB ²⁾
180M	≥ 2	27	687	577	241	75	48	110	14	9	51.5	M16
180L	≥ 2	27	725	615	241	75	48	110	14	9	51.5	M16
200	≥ 2	25	768	658	285	80	55	110	16	10	59	M20
225S	≥ 4	28	814	674	295	85	60	140	18	11	64	M20
225M	2	28	809	699	295	85	55	110	16	10	59	M20
	≥ 4	28	839	699	295	85	60	140	18	11	64	M20
250	2	30	918	778	342	80	60	140	18	11	64	M20
	≥ 4	30	918	778	342	80	65	140	18	11	69	M20
280S	2	34	984	844	400	100	65	140	18	11	69	M20
	≥ 4	34	984	844	400	100	75	140	20	12	79.5	M20
280M	2	34	1035	895	400	100	65	140	18	11	69	M20
	≥ 4	34	1035	895	400	100	75	140	20	12	79.5	M20
315S	2	45	1160	1205	292	120	65	140	18	11	69	M20
	≥ 4	45	1190	1235	292	120	80	170	22	14	85	M20
315M	2	45	1310	1355	292	120	65	140	18	11	69	M20
	≥ 4	45	1340	1385	292	120	80	170	22	14	85	M20
315L	2	45	1310	1355	292	120	65	140	18	11	69	M20
	≥ 4	45	1340	1385	292	120	80	170	22	14	85	M20

THREE-PHASE FRAME SIZE 180 - 315 IM B5 AMHE SERIES - CAST IRON FRAME



IEC	Poles	M	N	P	T	LA	S ¹⁾	D	E
180M	≥ 2	300	250	350	5	15	19	48	110
180L	≥ 2	300	250	350	5	15	19	48	110
200	≥ 2	350	300	400	5	17	19	55	110
225S	≥ 4	400	350	450	5	20	19	60	140
225M	2	400	350	450	5	20	19	55	110
	≥ 4	400	350	450	5	20	19	60	140
250	2	500	450	550	5	20	19	60	140
	≥ 4	500	450	550	5	20	19	65	140
280S	2	500	450	550	5	22	19	65	140
	≥ 4	500	450	550	5	22	19	75	140
280M	2	500	450	550	5	22	19	65	140
	≥ 4	500	450	550	5	22	19	75	140
315S	2	600	550	660	6	22	24	65	140
	≥ 4	600	550	660	6	22	24	80	170
315M	2	600	550	660	6	22	24	65	140
	≥ 4	600	550	660	6	22	24	80	170
315L	2	600	550	660	6	22	24	65	140
	≥ 4	600	550	660	6	22	24	80	170

IEC	Poles	F	GD	GA	DB ²⁾	EB	ED	EG
180M	≥ 2	14	9	51.5	M16	90	10	36
180L	≥ 2	14	9	51.5	M16	90	10	36
200	≥ 2	16	10	59	M20	90	10	42
225S	≥ 4	18	11	64	M20	110	15	42
225M	2	16	10	59	M20	90	10	42
	≥ 4	18	11	64	M20	110	15	
250	2	18	11	64	M20	110	20	42
	≥ 4	18	11	69	M20	110	20	42
280S	2	18	11	69	M20	110	18	42
	≥ 4	20	12	79.5	M20	110	18	
280M	2	18	11	69	M20	110	18	42
	≥ 4	20	12	79.5	M20	110	18	42
315S	2	18	11	69	M20	110	15	42
	≥ 4	22	14	85	M20	140	15	42
315M	2	18	11	69	M20	110	15	42
	≥ 4	22	14	85	M20	140	15	42
315L	2	18	11	69	M20	110	15	42
	≥ 4	22	14	85	M20	140	15	42

1) Clearance hole for screw. According to CEI EN 50347, 8 holes on the flange for 225 to 315 frame size

2) Centering holes in shaft extension to DIN 332 part 2