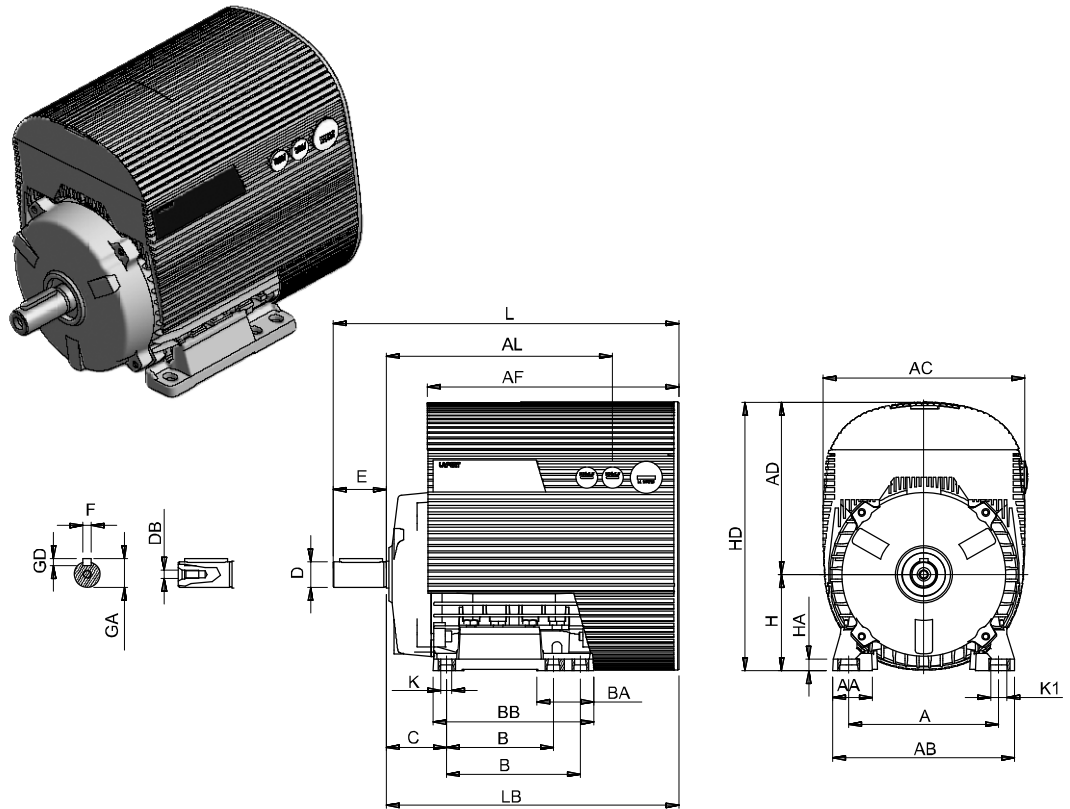


HPI FRAME SIZE 71 - 90 - 112 - 132 IM B3 ALUMINIUM ALLOY FRAME



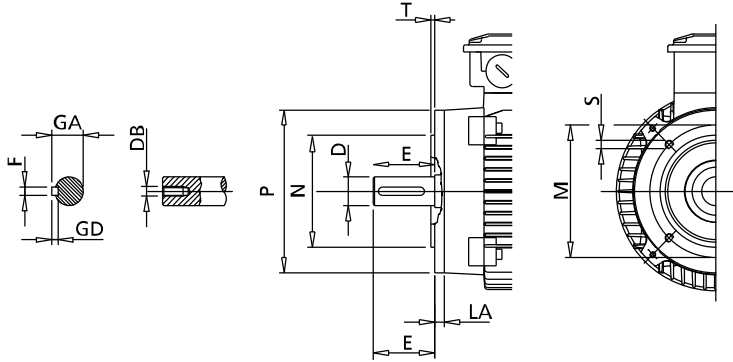
	IEC	H	A	B	C	K ¹⁾	AB	BB	AD ²⁾	HD ²⁾	AC	HA
	71	71	112	90	45	7	144	109	140	211	160	9
	90S	90	140	100	56	10	170	150	183	273	196	11
	90L	90	140	125	56	10	170	150	183	273	196	11
	112	112	190	140	70	12.5	220	175	228	340	246	15
	132	132	216	178	89	12	256	218	243	375	280	17

	IEC	K ¹⁾	L	LB	AL	AF	BA	AA	D	E	F	GD	GA	DB ³⁾
	71	17	280	250	200	200	22	30	14	30	5	5	16	M5
	90S	15	369	319	254	280	28/53	37	24	50	8	7	27	M8
	90L	15	369	319	254	280	28/53	37	24	50	8	7	27	M8
	112	19	457	397	332	350	46	48	28	60	8	7	31	M10
	132	20	545	465	380	415	45	59	38	80	10	8	41	M12

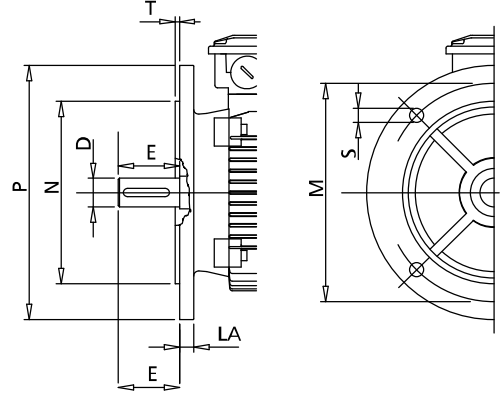
- 1) Clearance hole for screw
- 2) Maximum dimension
- 3) Centering holes in shaft extensions to DIN 332 part 2

HPI FRAME SIZE 71 - 90 - 112 - 132 IM B14, IM B5 ALUMINIUM ALLOY FRAME

IM B14

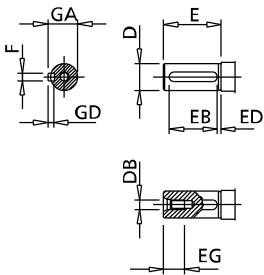


IM B5



SMALL FLANGE B14							LARGE FLANGE B14					FLANGE B5						
IEC	P	N	LA	M	T	S ¹⁾	P	N	LA	M	T	S ¹⁾	M	N	P	T	LA	S ¹⁾
71	105	70	11	85	2.5	M6	140	95	8	115	2.5	M8	130	110	160	3.5	10	M8
90S-L	140	95	10	115	3	M8	160	110	9	130	3.5	M8	165	130	200	3.5	12	M10
112	160	110	10	130	3.5	M8	200	130	12	165	3.5	M10	215	180	250	4	14	M12
132	200	130	30	165	3.5	M10	250	180	12	215	4	M12	265	230	300	4	14	M12

1) Clearance hole for screw



IEC	D	E	F h9	GD	GA	DB ¹⁾	EG	EB	ED
71	14 h6	30	5	5	16	M5	12.5	20	4
90S-L	24 h6	50	8	7	27	M8	19	40	4
112	28 h6	60	8	7	31	M10	22	50	4
132	38 k6	80	10	8	41	M12	28	70	5

1) Centering holes in shaft extension to DIN 332 part 2