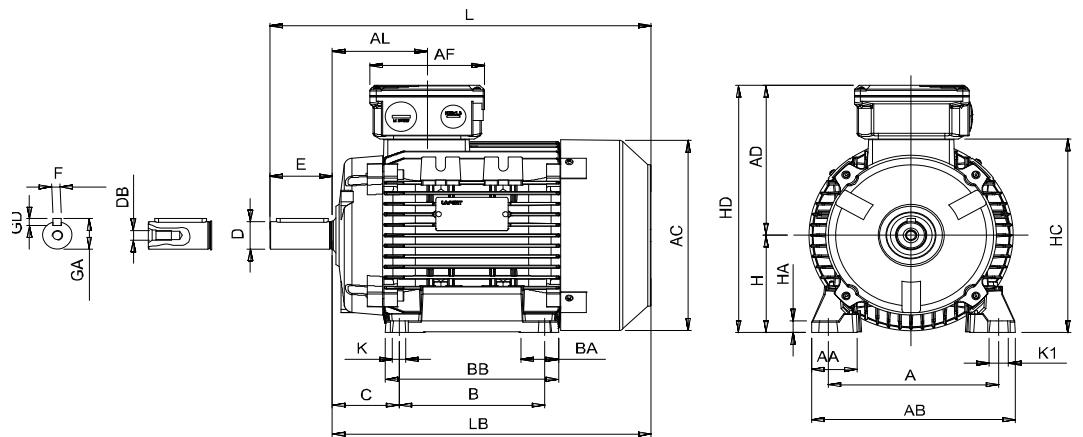
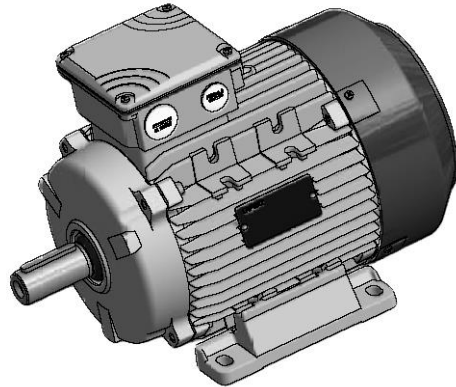


HPS FRAME SIZE 71 - 90 - 112 IM B3 ALUMINIUM ALLOY FRAME



	IEC	H	A	B	C	K ¹⁾	AB	BB	AD ²⁾	HD ²⁾	AC	HC	HA
71		71	112	90	45	7	144	109	112	183	142	142	9
90S		90	140	100	56	10	170	150	148	238	180	181	11
90L		90	140	125	56	10	170	150	148	238	180	181	11
112M		112	190	140	70	12.5	220	175	171	283	225	226	15
112L		112	190	140	70	12.5	220	175	171	283	225	226	15

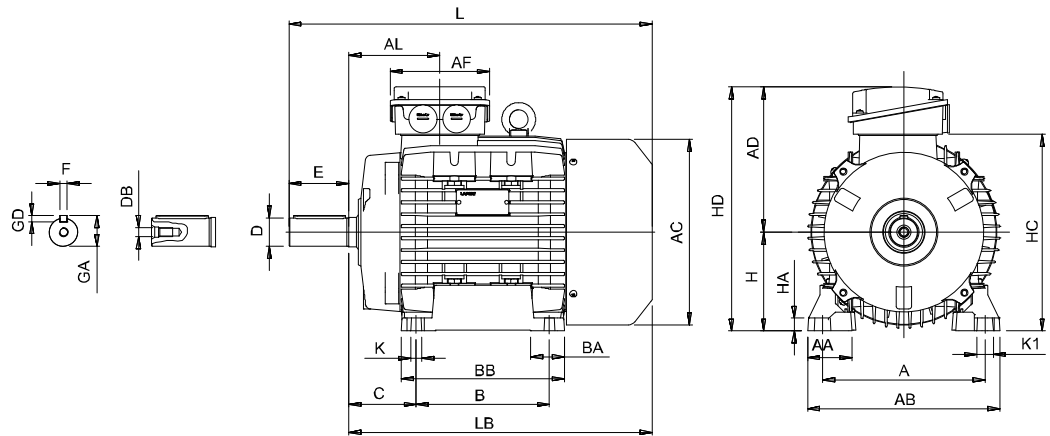
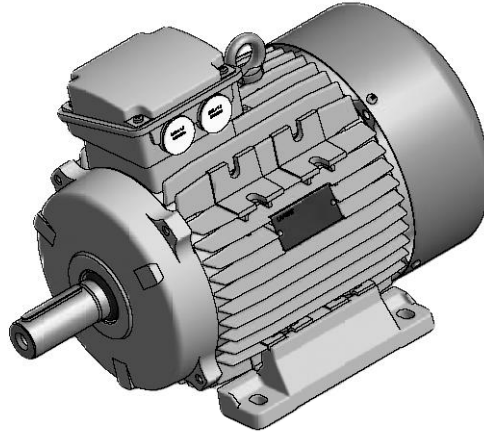
	IEC	K1	L	LB	AL	AF	BA	AA	D/DA	E/EA	F/FA	GD	GA/GC	DB ³⁾
71		17	245	215	75	93	22	30	14	30	5	5	16	M5
90S		15	317	267	85	110	28/53	37	24	50	8	7	27	M8
90L		15	317	267	85	110	28/53	37	24	50	8	7	27	M8
112M		19	388	328	92	110	46	48	28	60	8	7	31	M10
112L		19	410	350	92	110	46	48	28	60	8	7	31	M10

1) Clearance hole for screw

2) Maximum dimension

3) Centering holes in shaft extensions to DIN 332 part 2

HPS FRAME SIZE 132 IM B3 ALUMINIUM ALLOY FRAME



IEC	H	A	B	C	K ¹⁾	AB	BB	AD ²⁾	HD ²⁾	AC	HC	HA
132M	132	216	178	89	12	256	218	195	327	248	261	17
132L	132	216	178	89	12	256	218	195	327	248	261	17
132L	132	216	178	89	12	256	218	195	327	248	261	17

IEC	K1	L	LB	AL	AF	BA	AA	D/DA	E/EA	F/FA	GD	GA/GC	DB ³⁾
132M	20	482	402	120	133	45	59	38	80	10	8	41	M12
132L	20	505	425	120	133	45	59	38	80	10	8	41	M12
132L	20	556	476	120	133	45	59	38	80	10	8	41	M12

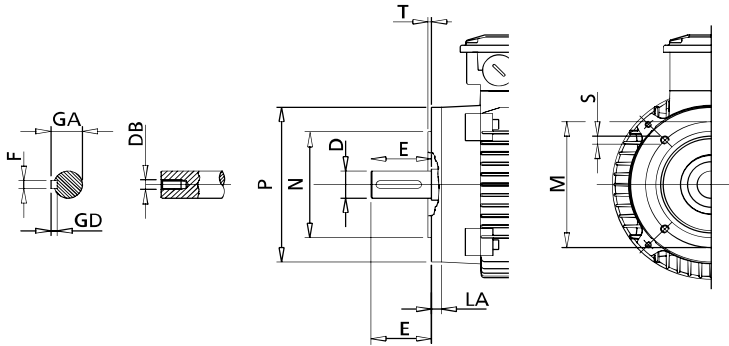
1) Clearance hole for screw

2) Maximum dimension

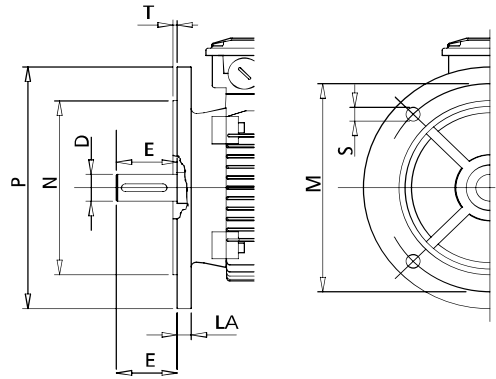
3) Centering holes in shaft extensions to DIN 332 part 2

HPS FRAME SIZE 71 - 90 - 112 - 132 IM B14, IM B5 ALUMINIUM ALLOY FRAME

IM B14

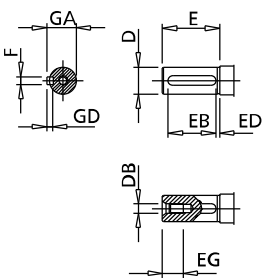


IM B5



IEC	SMALL FLANGE B14						LARGE FLANGE B14						FLANGE B5					
	P	N	LA	M	T	S ¹⁾	P	N	LA	M	T	S ¹⁾	M	N	P	T	LA	S ¹⁾
71	105	70	11	85	2.5	M6	140	95	8	115	2.5	M8	130	110	160	3.5	10	M8
90S-L	140	95	10	115	3	M8	160	110	9	130	3.5	M8	165	130	200	3.5	12	M10
112M- \square L	160	110	10	130	3.5	M8	200	130	12	165	3.5	M10	215	180	250	4	14	M12
132M- \square L- \square L	200	130	30	165	3.5	M10	250	180	12	215	4	M12	265	230	300	4	14	M12

1) Clearance hole for screw



IEC	D	E	F h9	GD	GA	DB	EG	EB	ED
71	14 \square	30	5	5	16	M5	12.5	20	4
90S-L	24 \square	50	8	7	27	M8	19	40	4
112M- \square L	28 \square	60	8	7	31	M10	22	50	4
132M- \square L- \square L	38 k6	80	10	8	41	M12	28	70	5

1) Centering holes in shaft extension to DIN 332 part 2