

Code	A (mm)	B (mm)	D (mm)	E (mm)	F (mm)	G (mm)
TSH.28	80	28,5	40	28	Hole for screw M5 DIN7991	25,5
TSH.43	100	47	50	43	Hole for screw M8 DIN7991	42

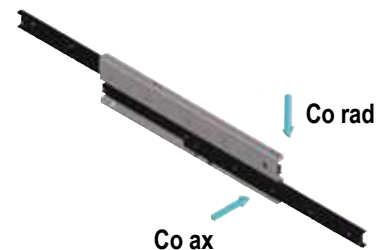
The slide TSHX offers high corrosion resistance, with all components and intermediate element in INOX, except the rails. The TSHX have the same dimensions and performance as standard version TSH. Could be provided the versions G1 with light play and the version P1 with light preload.

Order code ex. :

- TSH28-610 standard slide with single stroke
- TSHX28-610-P1 slide with high corrosion resistance and preload P1
- TSHX28-610 slide with high corrosion resistance

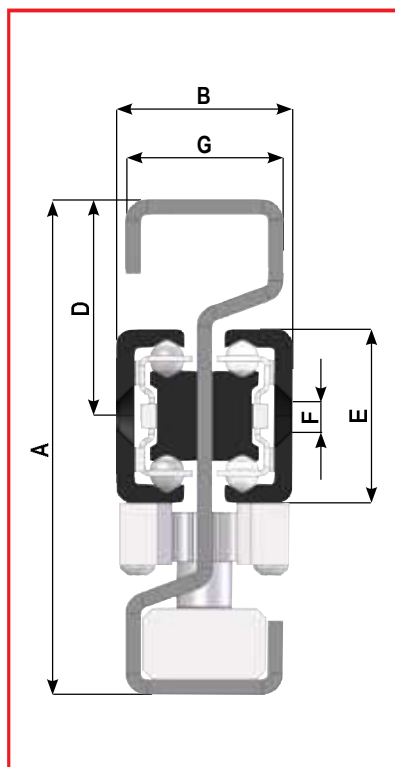
The nominal load capacities Co_{rad} are all based for load related to centered load position P, in the middle of the single slide. For applications with load in other positions, please refer to page 74. Load capacities are indicated per single slide.

For flexion f in relation to applied load and its position, please refer to page 76.



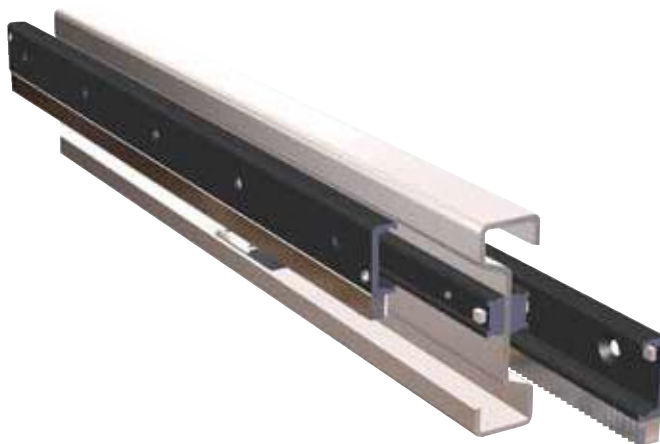
Code	Lenght L (mm)	Stroke H (mm)	n°Y access holes*	Dynamic coefficient C (N)	Load capacity Co rad (N)	Load capacity Co ax (N)	Weight (kg)
TSH.28-290	290	295	1	868	577	336	1,8
TSH.28-370	370	380	1	1143	762	443	2,3
TSH.28-450	450	460	1	1525	1020	593	2,8
TSH.28-530	530	540	2	1802	1206	701	3,3
TSH.28-610	610	620	2	2187	1466	853	3,8
TSH.28-690	690	700	2	2464	1652	961	4,3
TSH.28-770	770	780	2	2851	1913	1113	4,8
TSH.28-850	850	860	3	3128	2099	1221	5,3
TSH.28-930	930	940	3	3515	2361	1374	5,8
TSH.28-1010	1010	1020	3	3792	2546	1423	6,3
TSH.28-1090	1090	1100	3	4068	2370	1322	6,8
TSH.28-1170	1170	1180	4	4456	2213	1235	7,3
TSH.28-1250	1250	1260	4	4733	2076	1158	7,8
TSH.28-1330	1330	1340	4	5121	1955	1091	8,2
TSH.28-1410	1410	1420	4	5397	1847	1031	8,7
TSH.28-1490	1490	1500	5	5785	1750	977	9,2

Code	Lenght L (mm)	Stroke H (mm)	n°Y access holes*	Dynamic coefficient C (N)	Load capacity Co rad (N)	Load capacity Co ax (N)	Weight (kg)
TSH.43-530	530	545	2	3490	2187	1266	7,3
TSH.43-610	610	625	2	3824	2393	1385	8,3
TSH.43-690	690	705	2	4468	2799	1621	9,5
TSH.43-770	770	785	2	5112	3206	1856	10,5
TSH.43-850	850	865	3	5758	3614	2092	11,7
TSH.43-930	930	945	3	6404	4022	2329	12,7
TSH.43-1010	1010	1025	3	7051	4431	2565	13,9
TSH.43-1090	1090	1105	3	7698	4808	2802	15,0
TSH.43-1170	1170	1185	4	8028	4495	2919	16,1
TSH.43-1250	1250	1265	4	8675	4220	2903	17,2
TSH.43-1330	1330	1345	4	9322	3977	2736	18,3
TSH.43-1410	1410	1425	4	9969	3761	2587	19,4
TSH.43-1490	1490	1505	5	10617	3567	2453	20,5
TSH.43-1570	1570	1585	5	11265	3392	2333	21,6
TSH.43-1650	1650	1665	5	11913	3233	2224	22,7
TSH.43-1730	1730	1745	5	12240	3089	2124	23,8
TSH.43-1810	1810	1825	6	12888	2956	2033	24,9
TSH.43-1890	1890	1905	6	13536	2835	1950	26,0
TSH.43-1970	1970	1985	6	14184	2723	1873	27,1

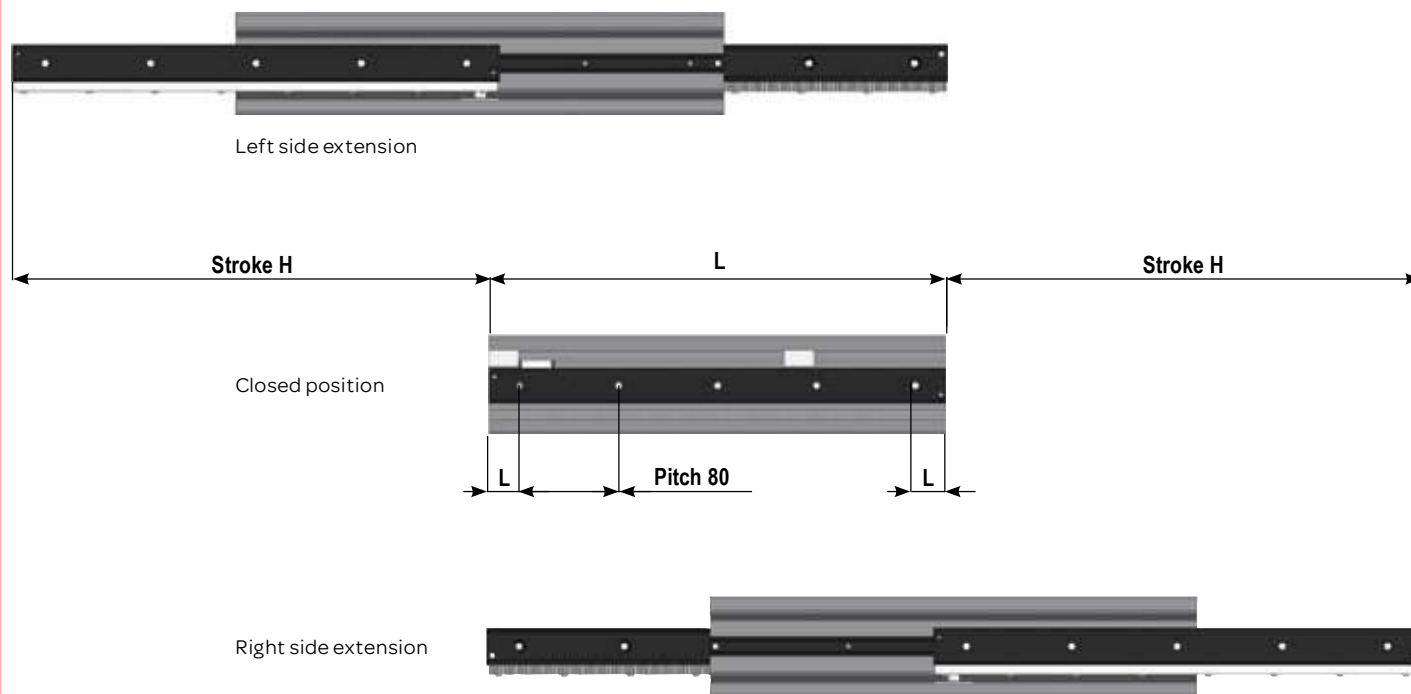


The TSH..DSY with synchronized movement for both single and double stroke, is composed of two semi-telescopic slides SR that move together, as connected by an integrated rack & pinion system. Hereby moving the intermediate element 500mm the mobile part extends 1000mm.

System particularly useful for High-speed telescopic slide applications and double side telescopic slides movements, as the intermediate element automatically follows smoothly the movement, without any strong impact, as the element is dragged along with the movement all the time.



TSH..DSY double stroke version



Code	A (mm)	B (mm)	D (mm)	E (mm)	F (mm)	G (mm)
TSH28DSY	80	28,5	35	28	Hole for screw M5 DIN7991	25,5
TSH43DSY	100	47	45	43	Hole for screw M8 DIN7991	42

Synchronized telescopic slides TSH..DSY

Code	Lenght L (mm)	Stroke H (mm)	Dynamic coefficient C (N)	Load capacity Co rad (N)	Load capacity Co ax (N)	Weight (kg)
TSH28DSY-290	290	270	982	661	385	1,8
TSH28DSY-370	370	350	1259	846	493	2,3
TSH28DSY-450	450	430	1648	1110	646	2,8
TSH28DSY-530	530	510	1924	1295	753	3,3
TSH28DSY-610	610	590	2313	1559	907	3,8
TSH28DSY-690	690	670	2589	1744	1014	4,3
TSH28DSY-770	770	750	2978	2008	1168	4,8
TSH28DSY-850	850	830	3254	2192	1276	5,3
TSH28DSY-930	930	910	3644	2456	1429	5,8
TSH28DSY-1010	1010	990	3920	2641	1509	6,3
TSH28DSY-1090	1090	1070	4196	2503	1396	6,8
TSH28DSY-1170	1170	1150	4585	2328	1299	7,3
TSH28DSY-1250	1250	1230	4861	2177	1215	7,8
TSH28DSY-1330	1330	1310	5251	2044	1141	8,2
TSH28DSY-1410	1410	1390	5527	1926	1075	8,7
TSH28DSY-1490	1490	1470	5916	1822	1016	9,2

Code	Lenght L (mm)	Stroke H (mm)	Dynamic coefficient C (N)	Load capacity Co rad (N)	Load capacity Co ax (N)	Weight (kg)
TSH43DSY-530	530	500	4181	2.653	1.536	7,5
TSH43DSY-610	610	580	4830	3.063	1.774	8,6
TSH43DSY-690	690	660	5479	3.474	2.011	9,8
TSH43DSY-770	770	740	5794	3.665	2.122	10,8
TSH43DSY-850	850	820	6443	4.075	2.359	12,0
TSH43DSY-930	930	900	7093	4.486	2.597	13,1
TSH43DSY-1010	1010	980	7742	4.897	2.835	14,3
TSH43DSY-1090	1090	1060	8392	5.216	3.073	15,4
TSH43DSY-1170	1170	1140	9041	4.850	3.311	16,5
TSH43DSY-1250	1250	1220	9690	4.532	3.117	17,7
TSH43DSY-1330	1330	1300	10009	4.253	2.925	18,8
TSH43DSY-1410	1410	1380	10658	4.006	2.755	20,0
TSH43DSY-1490	1490	1460	11308	3.787	2.604	21,1
TSH43DSY-1570	1570	1540	11957	3.590	2.469	22,2
TSH43DSY-1650	1650	1620	12607	3.413	2.347	23,4
TSH43DSY-1730	1730	1700	13256	3.252	2.237	24,5
TSH43DSY-1810	1810	1780	13906	3.106	2.136	25,6
TSH43DSY-1890	1890	1860	14226	2.972	2.044	26,8
TSH43DSY-1970	1970	1940	14875	2.850	1.960	27,9

The nominal load capacities Co rad are all based for load related to centered load position P, in the middle of the single slide. For applications with load in other positions, please refer to page 74.

Load capacities are indicated per single slide.

For flexion f in relation to applied load and its position, please refer to page 76.

